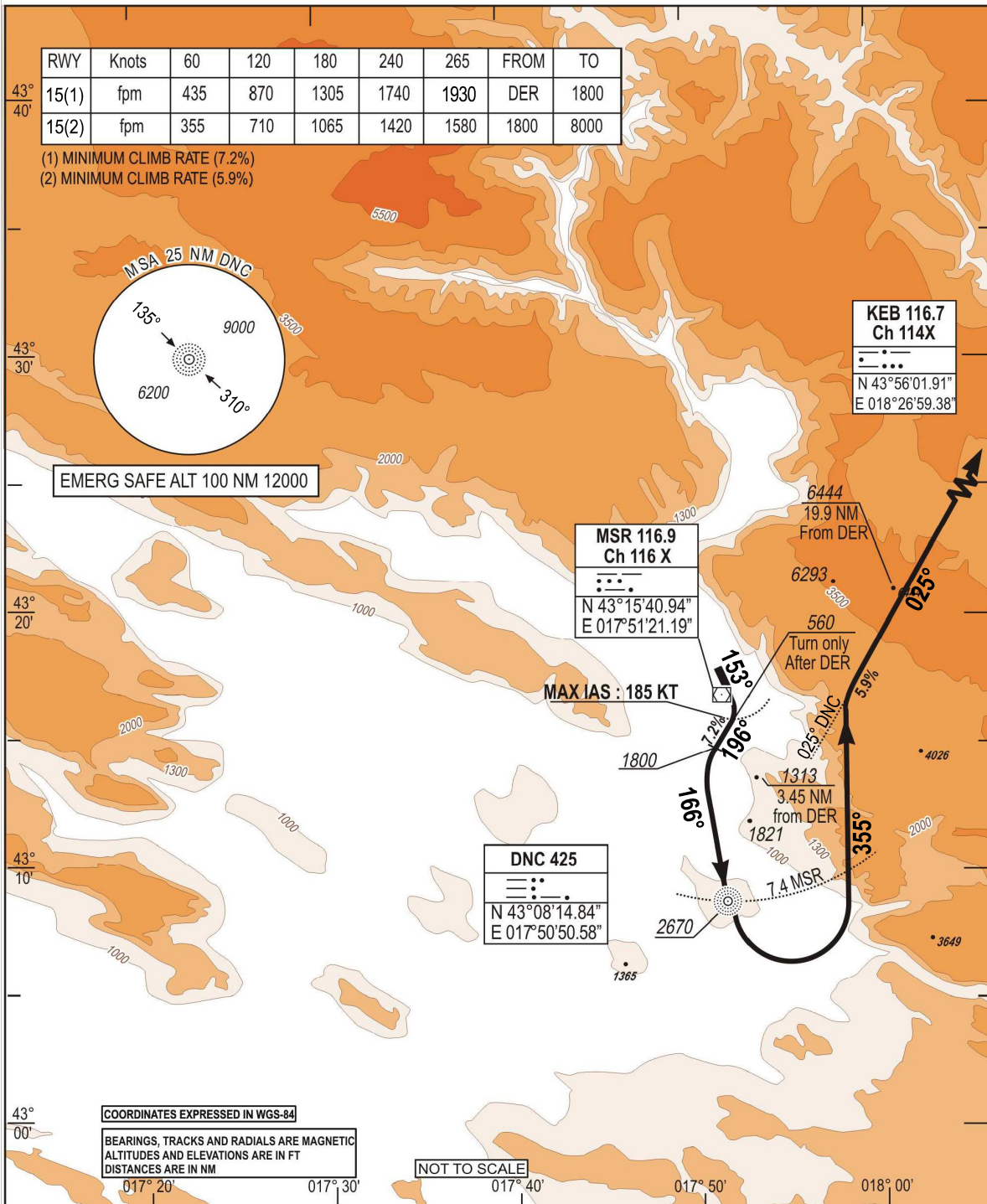


**STANDARD DEPARTURE CHART  
INSTRUMENT (SID) - ICAO**

TRANSITION  
ALTITUDE  
10 000 FT  
VAR 5°E (2020)

APP 120.225  
129.875  
TWR 125.550  
ATIS 126.225

**MOSTAR (LQMO)  
KEB 1A RWY 15**



CHG: MAG VAR & RWY MAG BEARING;

SID	DEPARTURE ROUTE DESCRIPTION
<p>KEB 1A (RWY 15)</p>	<ul style="list-style-type: none"> <li>- Climb RM 153° (1)</li> <li>- After DER, when passing 560 FT, turn right on track 196° (2) to intercept DNC course 166° inbound</li> <li>- Cross DNC at or above 2670 FT. Thence turn left on track 355° to intercept DNC course 025° outbound direct KEB.</li> <li>- Then as directed by ATC.</li> </ul> <p>(1) Minimum climb rate : 7.2% from DER to 1800 FT. (2) Minimum climb rate : 5.9% after 1800 until 8000 FT.</p>

**THIS PAGE INTENTIONALLY LEFT BLANK**